



**MILES ESTATE AGENTS**

**Mulberry Lydeard St. Lawrence  
Taunton TA4 3SF**





A spacious detached 2/3 bedroom bungalow nestled in lovely mature gardens with refitted shower room, garage and parking in this much favoured village. Now with some scope for modernisation and no onward chain - early viewing highly recommended.





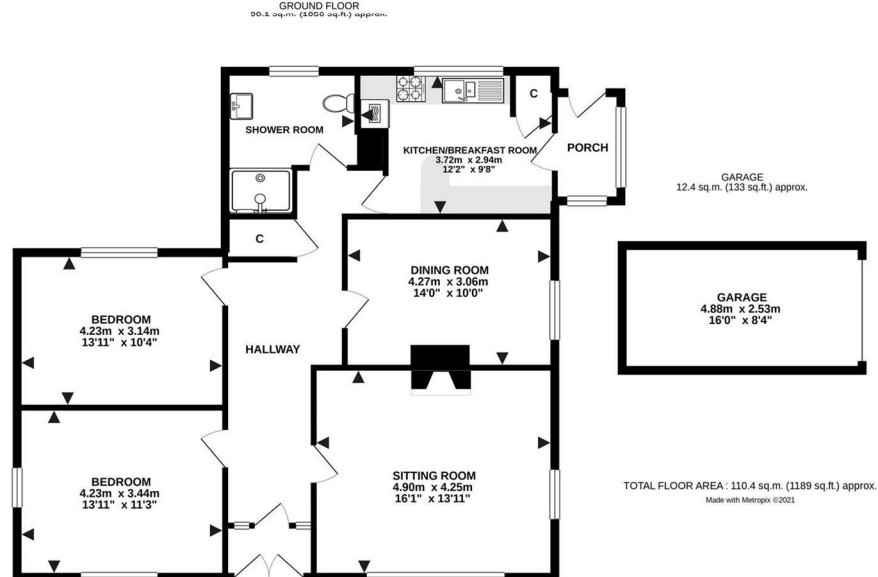


## Features:

- Spacious Entrance Hall
- Good Size Sitting Room
- Kitchen/Breakfast Room
- 2 Double Bedrooms
- Further Double Bedroom / Dining Room
- Refitted Shower Room
- Lovely Mature Gardens on All Sides
- Single Garage
- Off Road Parking
- No Onward Chain
- Council Tax Band E







Energy Efficiency Rating		
	Current	Potential
Very energy efficient - lower running costs		
(92 plus) A		
(81-91) B		
(69-80) C		
(55-68) D		
(39-54) E		
(21-38) F		
(1-20) G		
Not energy efficient - higher running costs		
England & Wales		
EU Directive 2002/91/EC		



Viewings strictly through the selling agents:

**Miles Estate Agents**

2 Piffin Lane, Bishops Lydeard, Taunton,  
Somerset, TA4 3AS

**Tel: 01823 470 500**

[lydeard@milesestateagents.co.uk](mailto:lydeard@milesestateagents.co.uk)

[www.milesestateagents.co.uk](http://www.milesestateagents.co.uk)

**rightmove**

**Zoopla.co.uk**

**OnTheMarket.com**

**MILES ESTATE AGENTS**



**BEST**

ESTATE AGENT GUIDE  
2019 : EXCEPTIONAL

**SALES**